

North East Toilet Cubicles Ltd.

Tel: 01429 277500

Email: info@netoiletcubicles.co.uk



Post Formed HPL Vanity - Typical Frame Drawings - Details

Shown with 18/19mm Duct and Shadow panels, may be supplied with SGL for to match Warrior range.

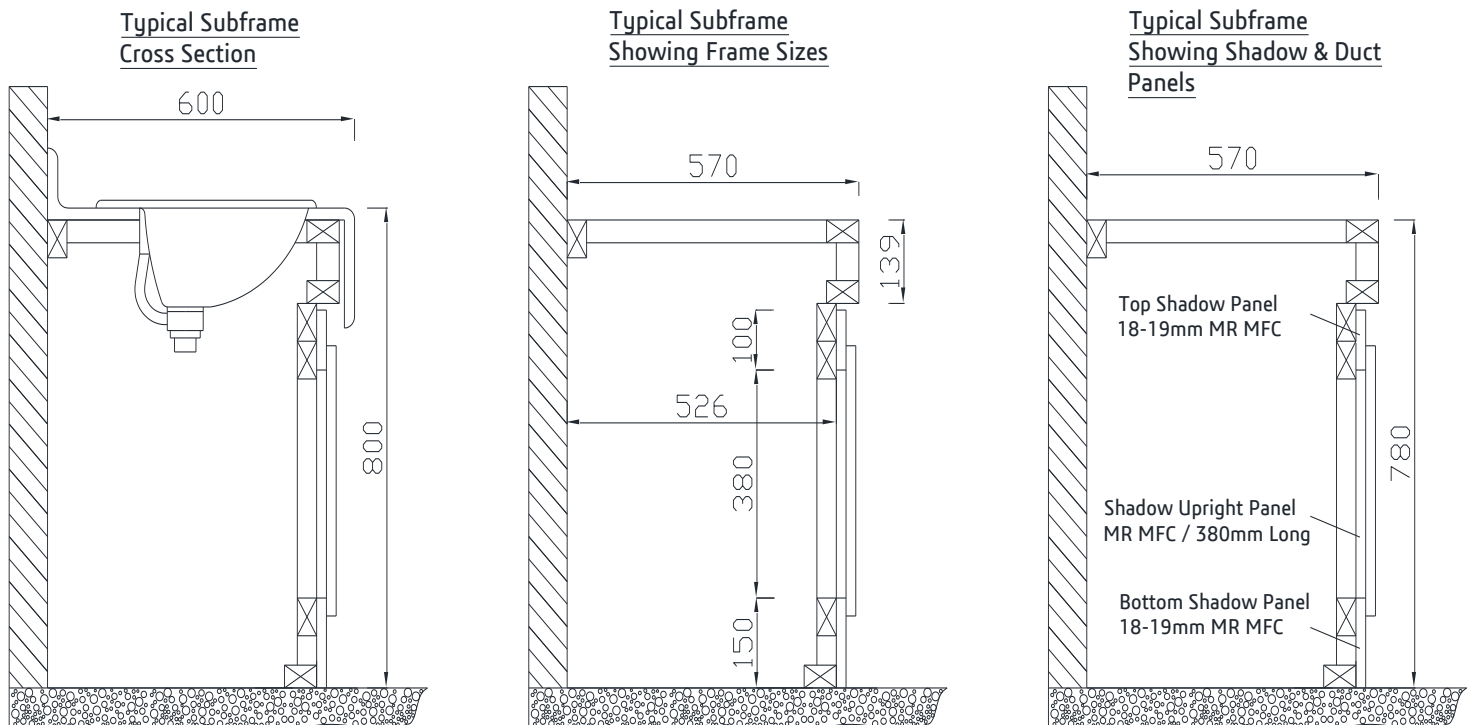
The following drawings are provided as a guide only.

Frame cross section drawings are based on a Vanity 1250mm Long x 600mm deep x 800mm high using 3X2 CLS.

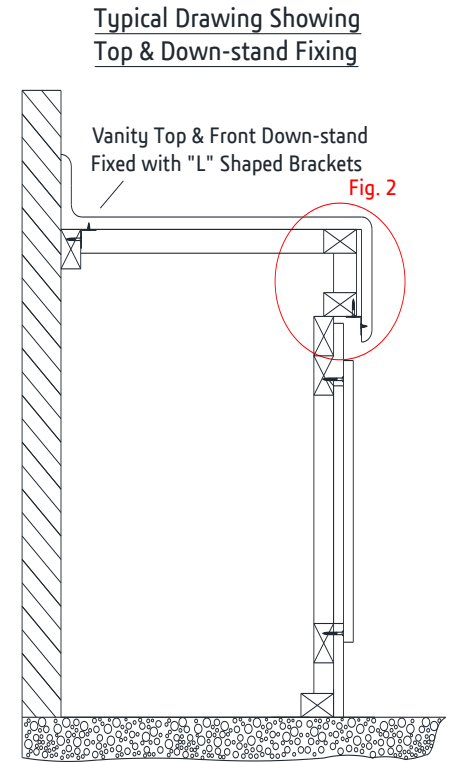
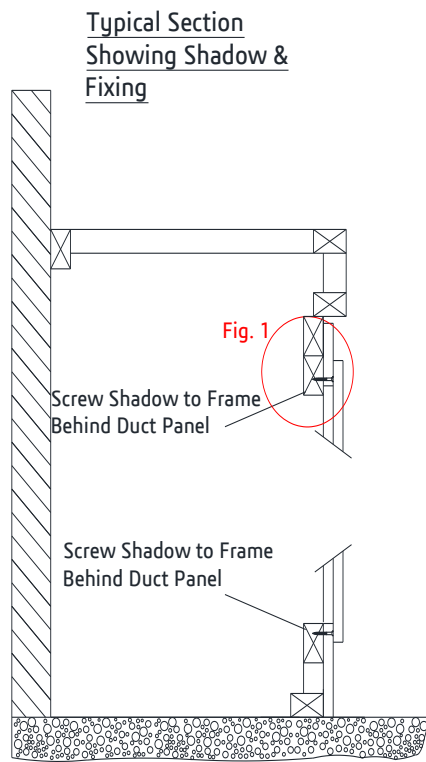
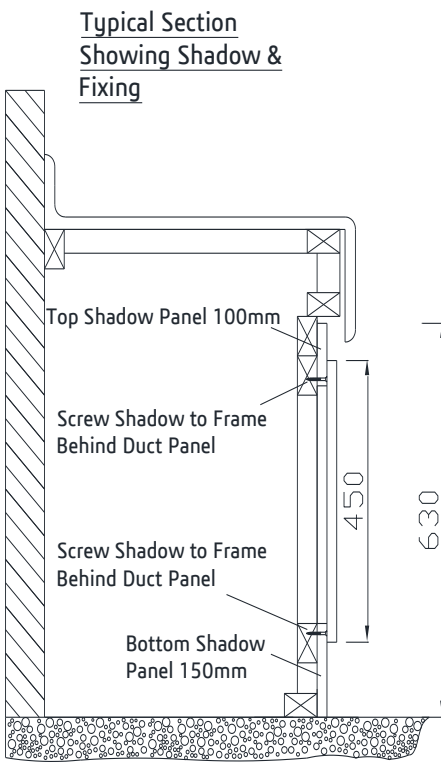
Top of frame needs to be 30mm less than the top for each finished end (island vanity would require 60mm shorter than the top).

Bottom of frame needs to be 74mm less than the top for each finished end (island vanity would require 148mm shorter frame).

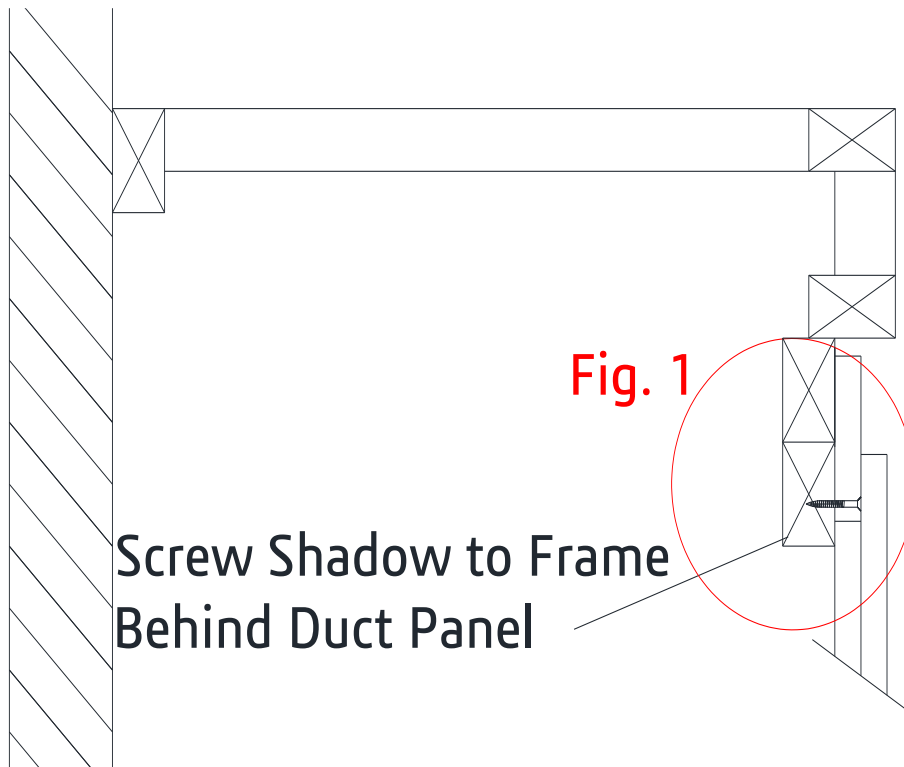
Note - Frame sizes will change when different depths and/or heights are supplied, frame modifications may also need to be made to suit waste/soil pipes, plumbing or drains etc.

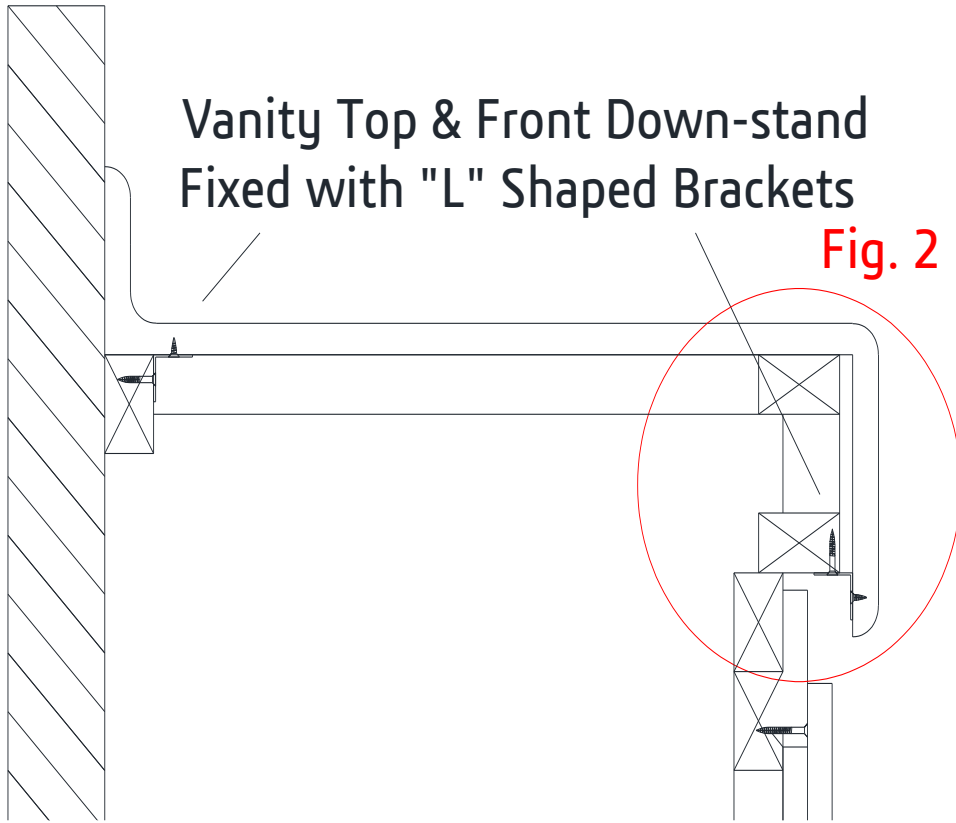


Information Provided for Guidance Only

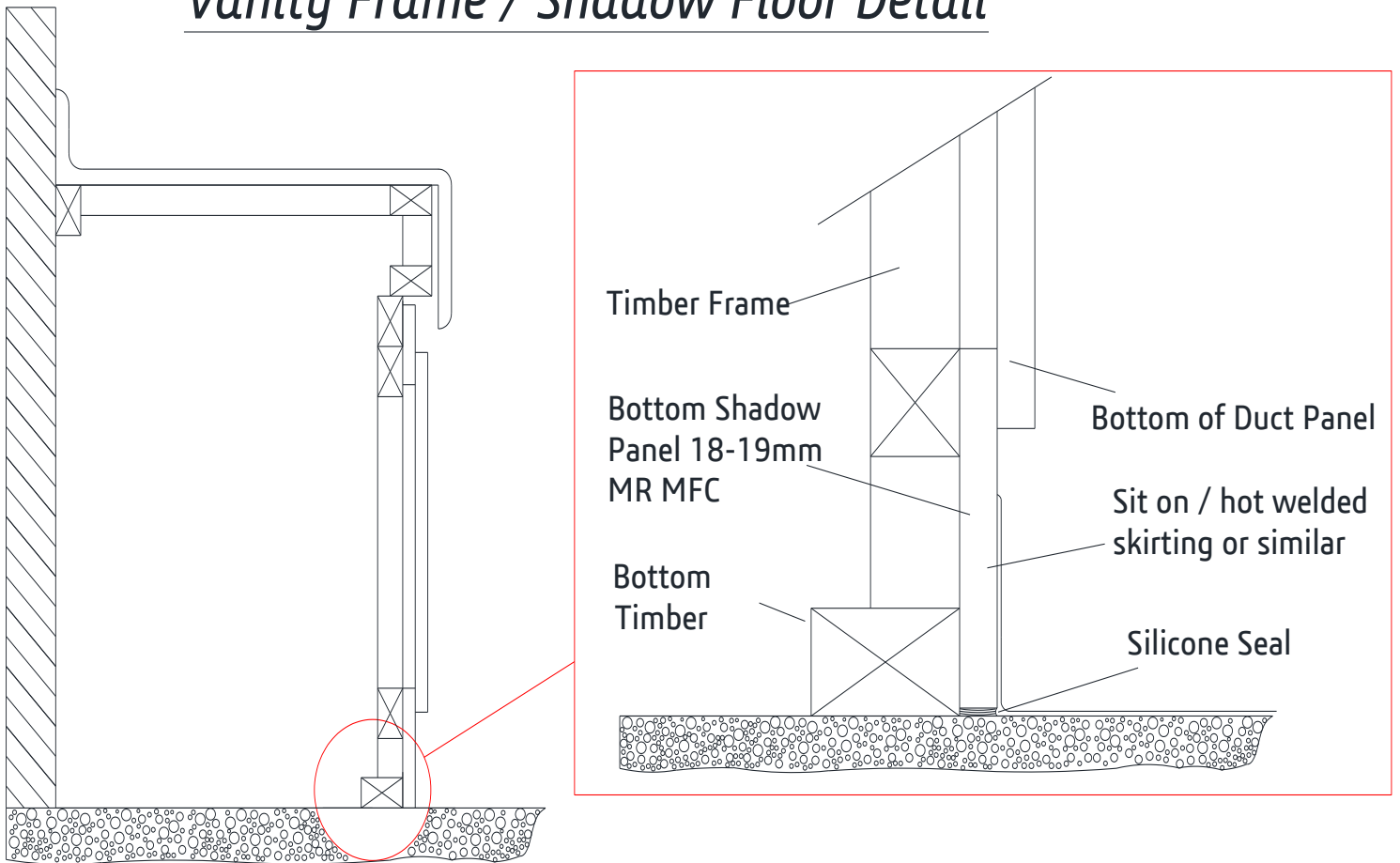


Information Provided for Guidance Only

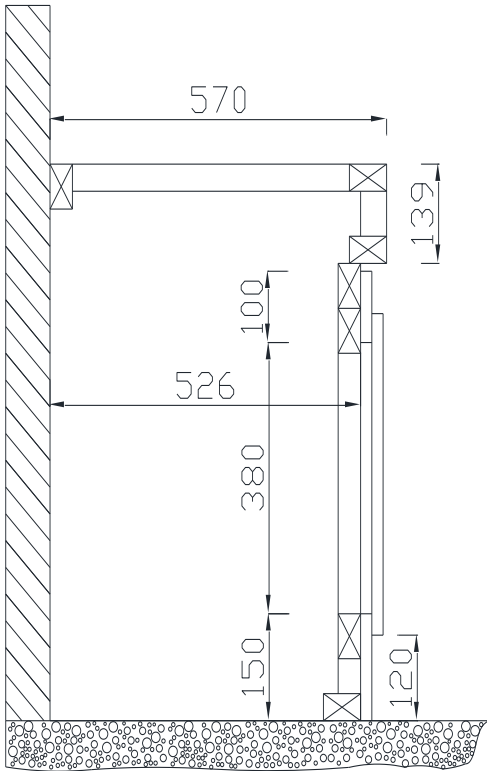




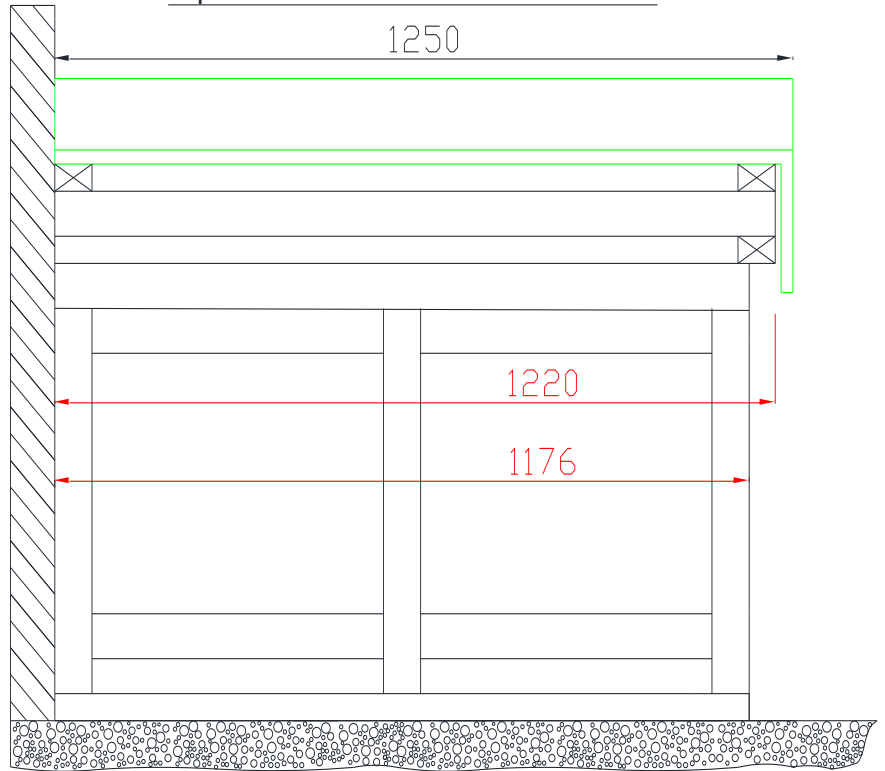
Vanity Frame / Shadow Floor Detail



Subframe Frame 600mm Wide Top

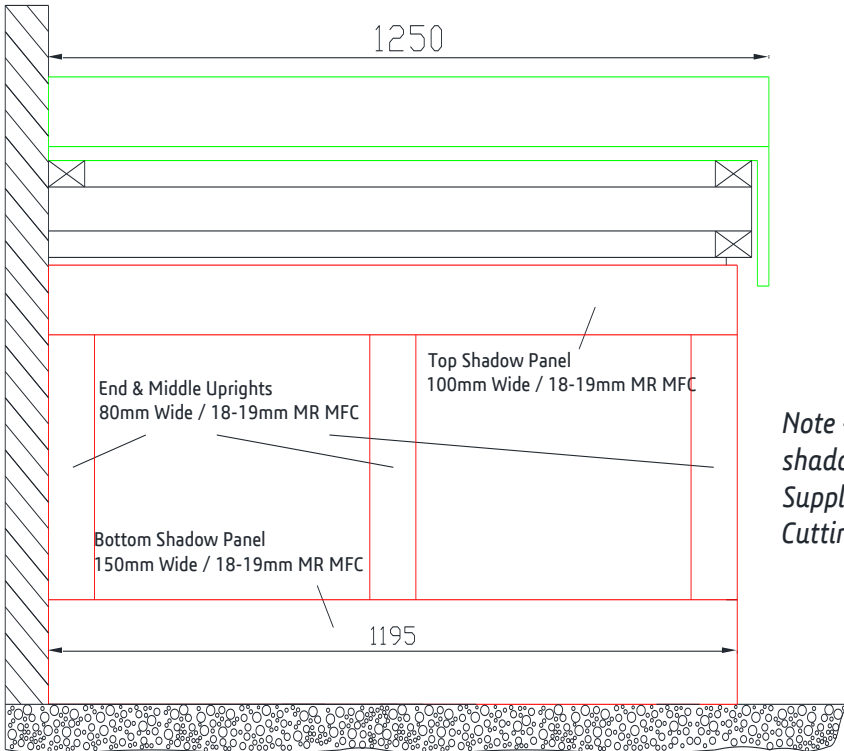


**Subframe Frame (Front View) 1250mm Long
Top Shown in Green - Frame Sizes in Red**

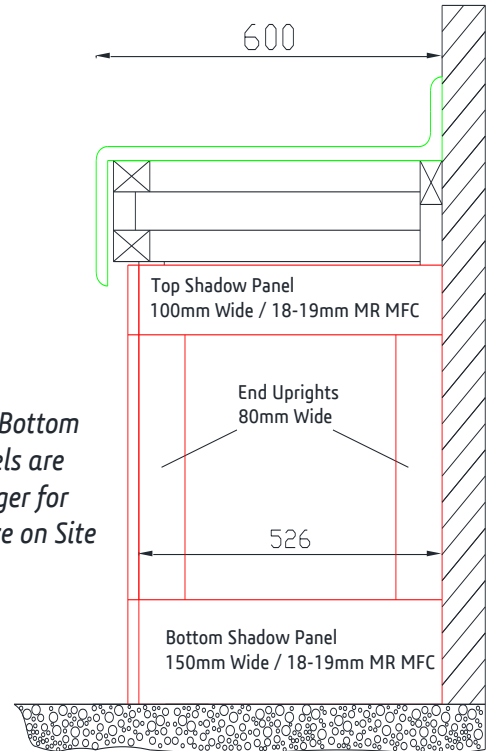


Information Provided for Guidance Only

**Front View Showing Subframe with Front Shadow
Top Shown in Green - Shadow Panels Shown in Red**

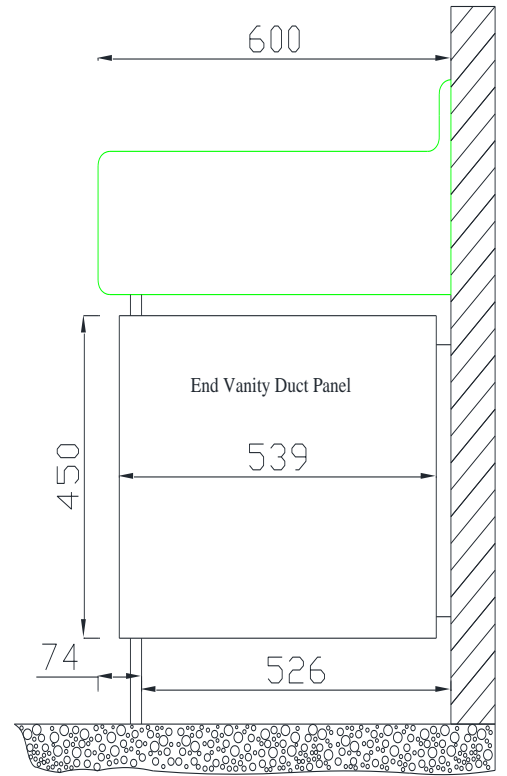
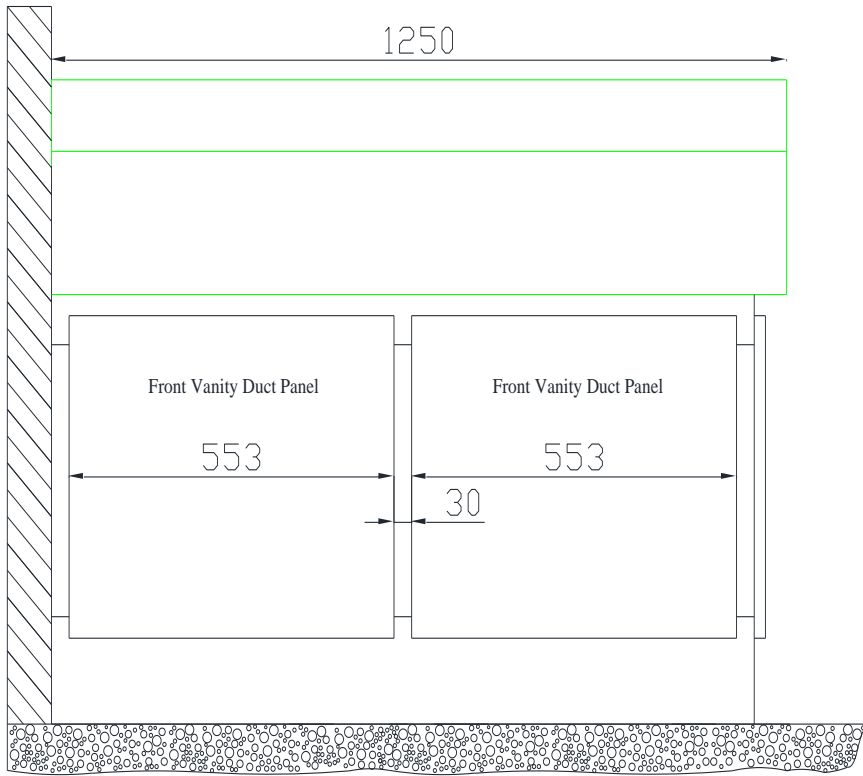


**End View Showing Top Shown in Green
Shadow Panels Shown in Red**



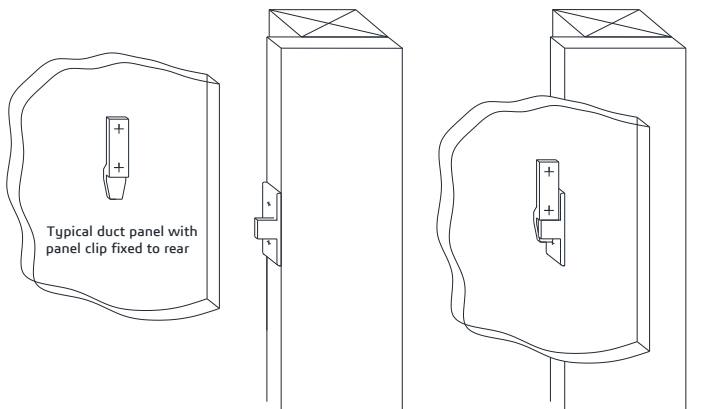
Note - Top & Bottom shadow Panels are Supplied Longer for Cutting to Size on Site

Information Provided for Guidance Only

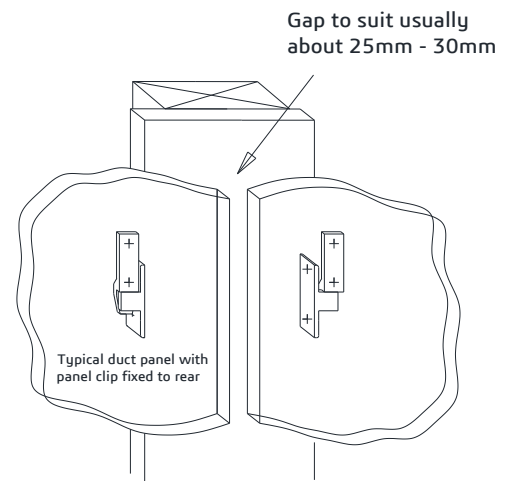


Panel Clip - Details

Typical drawing showing END / WALL shadow panel & duct panel clip arrangement



Typical drawing showing MIDDLE shadow panel & duct panel clip arrangement



Important information if Solid Grade Compact Laminate is supplied

PANEL CLIPS ~ 'L' BRACKETS ~ LOCK KEEPS ETC.

PILOT DRILLING FOR 12mm / 13mm SOLID GRADE COMPACT LAMINATE

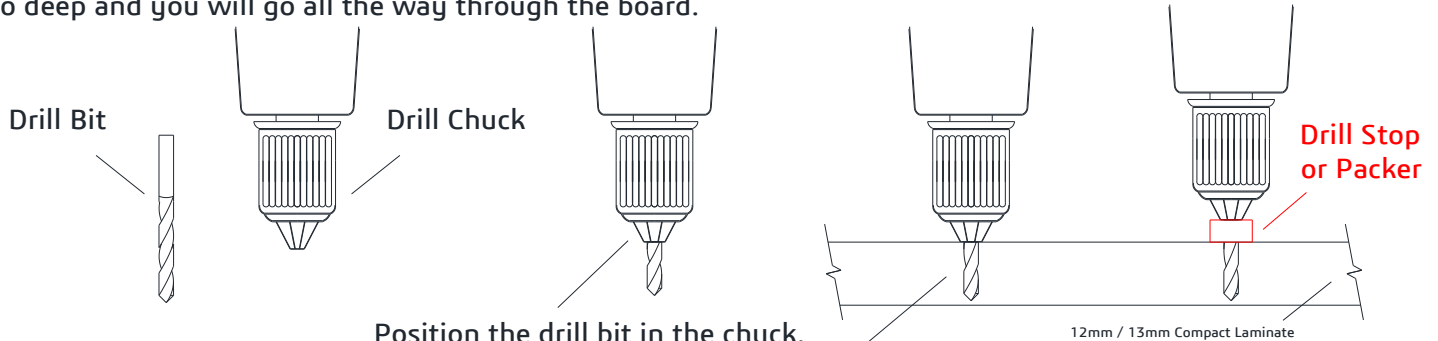
Position the drill bit in the drill chuck so that it is not sticking out further than the thickness of the board material

If required you should use a drill stop / packer

It is important to drill the hole to the correct depth.

Too short and you will break out the front of the board or round out the threads on the hole

To deep and you will go all the way through the board.



Position the drill bit in the chuck.
The drill bit should be deep enough so as not to come through the front of the board

DO NOT DRILL ALL THE WAY THROUGH THE BOARD

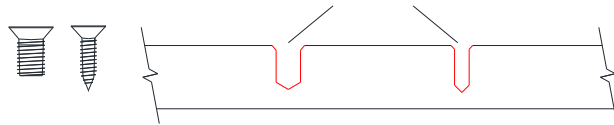
Correct Hole Depth

Holes also require a slight countersink to the top

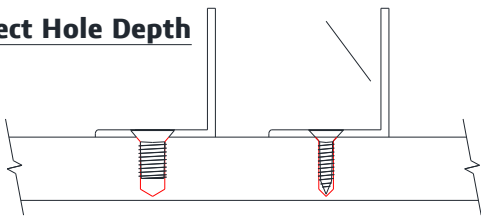


Lock Keep Shown as an example

Incorrect Hole Depth - Not Deep Enough

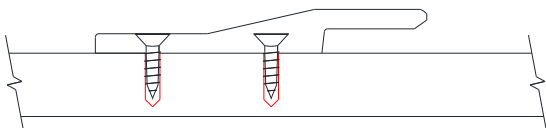


Correct Hole Depth

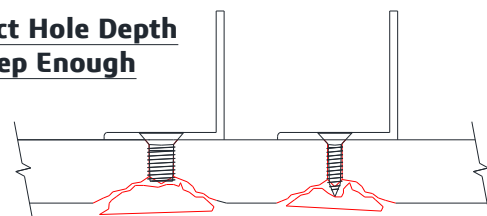


Correct Hole Depth

Lift of Panel Clips Shown as an example



Incorrect Hole Depth Not Deep Enough



If the holes are not drilled deep enough the fixings will break the front of the board

DO NOT DRILL ALL THE WAY THROUGH THE BOARD